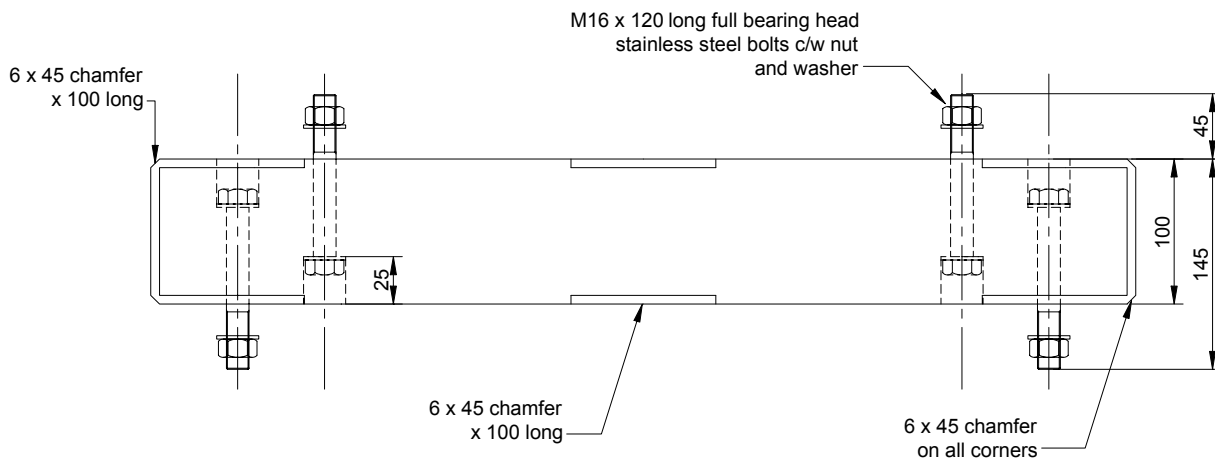
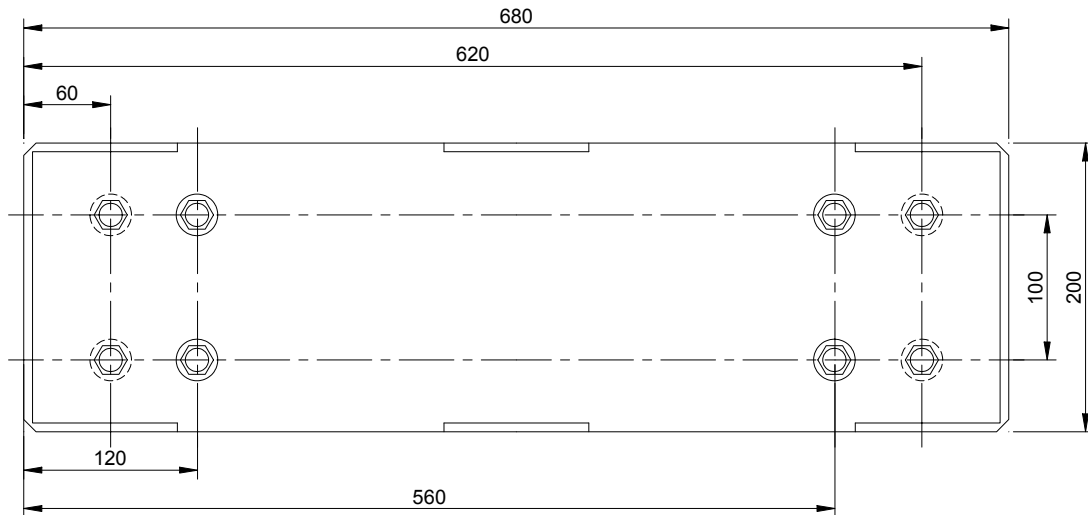


## COLD VESSEL LADDER SUPPORT [Ref: CVLS]

**Application:** To provide insulation between cold vessels and access ladders

Product benefits:

- The CVLS units insulate the ladder from the vessel enabling carbon steel to be used for ladder construction instead of stainless steel.
- The higher ladder temperature reduces ice build up, hence the ladder is safer to use.
- The efficiency of the vessel is improved



SAFE WORKING LOAD: 20kN shear

### NOTES:

- The block material has a temperature range  $-200^{\circ}\text{C}$  to  $+160^{\circ}\text{C}$  continuous and the supports have an effective 'K' value of less than  $0.5 \text{ W/m}^{\circ}\text{C}$ .
- The standard range loads are quoted at  $25^{\circ}\text{C}$  and should be derated linearly with temperature to 50% at  $+160^{\circ}\text{C}$ .
- No reduction in strength occurs below  $+25^{\circ}\text{C}$ .
- M16 bolts to be stainless steel grade A2.
- Insulating blocks are constructed from **ASEplus** 1010 SWA material.
- Unless otherwise stated, all dimensions are in millimetres.

**Atlantic Supports Engineering Ltd**

Tel: +44 (029) 20 708461, Fax +44 (029) 20 350437  
E-mail: sales@atlantic-supports.co.uk

Issue: 2.1 – 18/04/02

