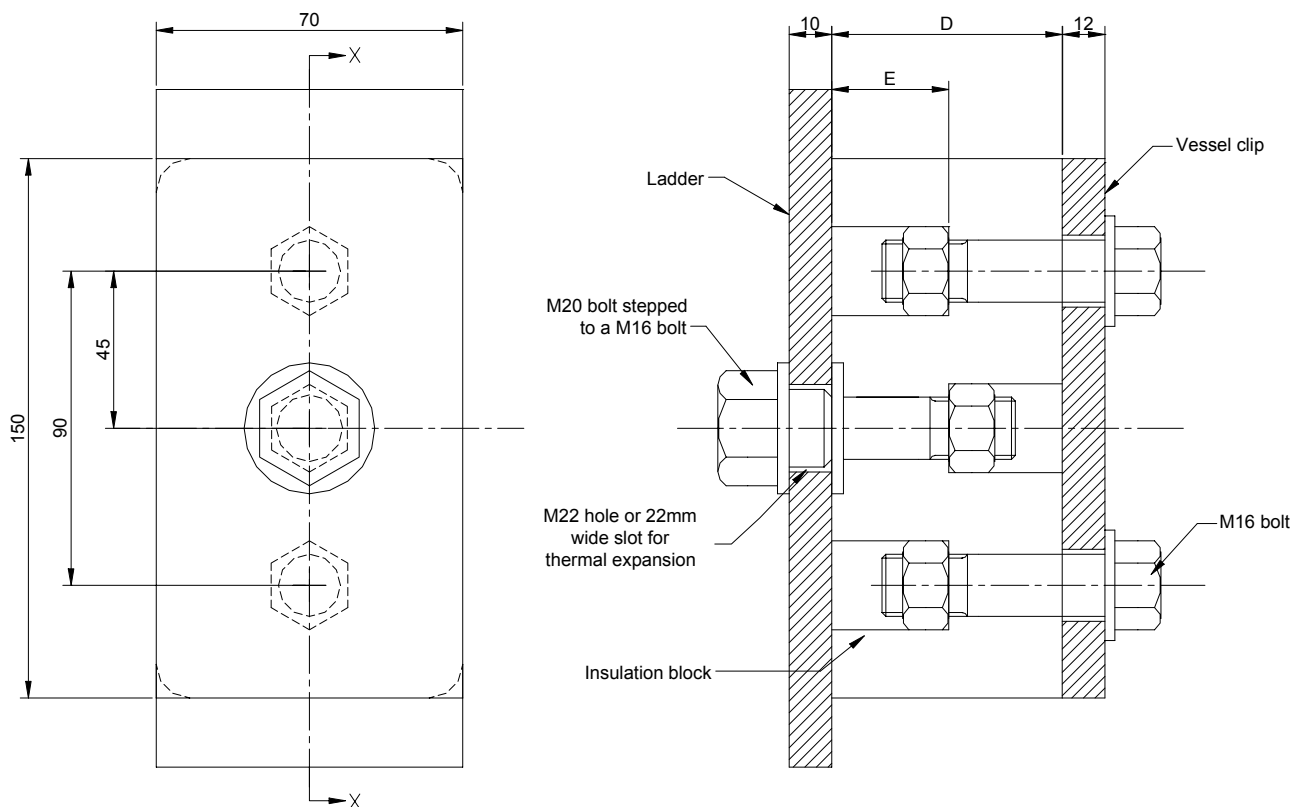


COLD VESSEL LADDER BLOCK [Ref: CVLB]

Application: To provide insulation between cold vessels and access ladders

Product benefits:

- The CVLB units insulate the ladder from the vessel enabling carbon steel to be used for ladder construction instead of stainless steel.
- The higher ladder temperature reduces ice build up, hence the ladder is safer to use.
- The efficiency of the vessel is improved



VIEW ON SECTION X - X SHOWING HEXAGONAL MOULDED SOCKETS FOR INTEGRAL NUTS.

Part number	D	E	Ladder fixing bolts		Vessel clip fixing bolts		Safe Working load kN Shear
			Number	Size	Number	Size	
CVLB/50	50	25	1	M20/M16 x 55	2	M16 x 55	6.4
CVLB/100	100	25	1	M20/M16 x 105	2	M16 x 105	10.8

NOTES:

- The block material has a temperature range -200°C to +160°C continuous and the supports have an effective 'K' value of less than 0.5 W/m°C.
- The standard range loads are quoted at 25°C and should be derated linearly with temperature to 50% at +160°C.
- No reduction in strength occurs below +25°C.
- M20/M16 stepped bolt to be grade 8.8 steel galvanised
- M16 vessel clip bolts to be stainless steel grade A2.
- Insulating blocks are constructed from **ASEplas** 1010 SWA material.
- Unless otherwise stated, all dimensions are in millimetres.

